

Архангельск (8182)63-90-72
Астана (7172)727-132
Астрахань (8512)99-46-04
Барнаул (3852)73-04-60
Белгород (4722)40-23-64
Брянск (4832)59-03-52
Владивосток (423)249-28-31
Волгоград (844)278-03-48
Вологда (8172)26-41-59
Воронеж (473)204-51-73
Екатеринбург (343)384-55-89
Иваново (4932)77-34-06

Ижевск (3412)26-03-58
Иркутск (395)279-98-46
Казань (843)206-01-48
Калининград (4012)72-03-81
Калуга (4842)92-23-67
Кемерово (3842)65-04-62
Киров (8332)68-02-04
Краснодар (861)203-40-90
Красноярск (391)204-63-61
Курск (4712)77-13-04
Липецк (4742)52-20-81
Киргизия (996)312-96-26-47

Магнитогорск (3519)55-03-13
Москва (495)268-04-70
Мурманск (8152)59-64-93
Набережные Челны (8552)20-53-41
Нижний Новгород (831)429-08-12
Новокузнецк (3843)20-46-81
Новосибирск (383)227-86-73
Омск (3812)21-46-40
Орел (4862)44-53-42
Оренбург (3532)37-68-04
Пенза (8412)22-31-16
Россия (495)268-04-70

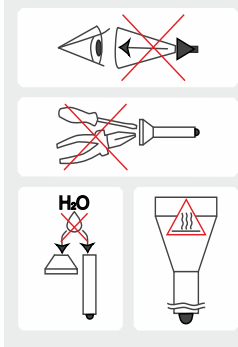
Пермь (342)205-81-47
Ростов-на-Дону (863)308-18-15
Рязань (4912)46-61-64
Самара (846)206-03-16
Санкт-Петербург (812)309-46-40
Саратов (845)249-38-78
Севастополь (8692)22-31-93
Симферополь (3652)67-13-56
Смоленск (4812)29-41-54
Сочи (862)225-72-31
Ставрополь (8652)20-65-13
Казахстан (772)734-952-31

Сургут (3462)77-98-35
Тверь (4822)63-31-35
Томск (3822)98-41-53
Тула (4872)74-02-29
Тюмень (3452)66-21-18
Ульяновск (8422)24-23-59
Уфа (347)229-48-12
Хабаровск (4212)92-98-04
Челябинск (351)202-03-61
Череповец (8202)49-02-64
Ярославль (4852)69-52-93

www.armytek.nt-rt.ru | | amy@nt-rt.ru

**Технические характеристики на фонари
тактические
серии Dobermann Pro
(модели Pro XHP35 HI, DOBERMANN Pro XP-L HI)
компании **ARMYTEK****

Warnings



1. Always follow the instructions from this manual and recommendations on battery usage.
2. Apply only the recommended power sources.
3. Do not reverse battery polarity.
4. Do not use different power sources together, i.e. old ones with new ones, charged with discharged. Do not use different types of batteries combined as the element with less capacity can be damaged.
5. Do not modify or recast the flashlight and its components as it will deprive you of the warranty.
6. Do not allow water or any other liquid to leak into the flashlight.
7. Do not aim a switched-on flashlight at people's or animals' eyes – it can cause temporary blindness.
8. Do not allow children to use the flashlight without your assistance.

! The producer will not be liable for any harm done to the user if it was caused by improper use of the product.

Care and Storage

It is recommended to clean the threads and O-rings off dirt and old grease once or twice per year. Remember that reliable protection from water and dust cannot be provided by worn out sealing. The fouling as well as lack of lubricant cause fast wear-out of threads and sealing rings. **To clean the threads do the following:**

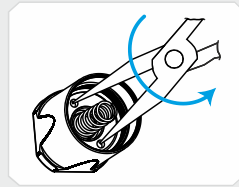
1. Unscrew the tailcap and remove the sealing ring carefully with a toothpick (do not use sharp metal things as they can damage the ring).
2. Wipe the sealing ring thoroughly with a soft cloth (or tissue). Do not use solvents. If the sealing ring is worn out or damaged replace it by a new one.
3. Clean the metal threads with a brush using ethanol. Be careful not to allow the applied liquid to get inside the flashlight or tailcap as it can cause fails in functionality of the flashlight.

After cleaning lubricate the thread and the sealing ring with polyalphaolefin-based silica grease, e.g. Nyogel 760G. The application of automotive and other improper grease can cause swelling and damage of the sealing rings.

In case of active operation and exploitation in dusty environments, it is recommended to perform cleaning and lubricating of the parts as often as required.

In case the rubber button is damaged, it should be replaced. You can also replace the switch with the spring in the same way. Replacement order:

1. Unscrew the tailcap.
2. Unscrew the first washer inside it to take out the switch. To do so you should use needle-nose pliers (round-nose pliers or another tool, the most suitable will be expansion pliers). Use the tool as it is shown at the picture. To replace the rubber button unscrew the second washer under the switch.
3. Replace the rubber button and assemble the parts in inverse sequence.



! Do not disassemble the flashlight except for unscrewing the thread ring gage and replacing the rubber button. There are no other parts in the flashlight that can be replaced by the user.

Service and Warranty

Armytek provides free warranty repair for 10 years (excluding batteries, chargers, switches and connectors which have 2 years warranty) from the date of buy with the document confirming the purchase.

Guarantee does not extend to damage during:

1. Improper usage.
2. Attempts to modify or repair the flashlight by nonqualified specialists.
3. Longtime application in chlorinated or polluted water, or other liquids (other than water).
4. High temperatures and chemicals' exposure (including the exposure of liquid from defected batteries).
5. Usage of low-quality batteries.

Specifications are subject to change without notice.

Dobermann PRO

THE MOST TECHNICALLY ADVANCED

USER MANUAL

Thank you for choosing the products of Armytek Optoelectronics Inc., Canada.
Please read this manual carefully before using the flashlight.

Specifications

Armytek Optoelectronics Inc. is a Canadian manufacturer that produces powerful and reliable flashlights designed especially for your needs. The components made in the USA and Japan. **10 years no-hassle warranty.**

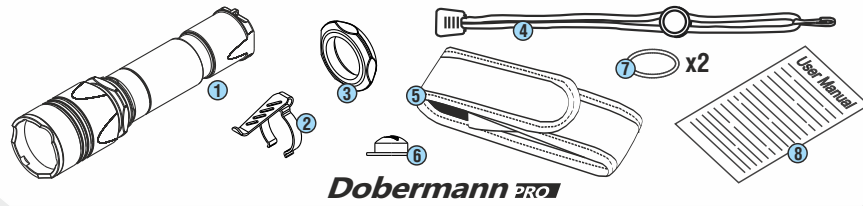
- Amazing brightness 1700 LED lumens and focused narrow light at the distance up to 390 meters for precise aiming.
- Compact and light-weight flashlight with good price for comfortable mounting on weapon.
- The highest standard of durability — stands up the recoil of 12 gauge shotgun, no-break operation after falling from the height and even at the 50 m depth.
- Perfectly selected brightness modes and easy operation for comfortable use.
- Marvelous light characteristics at available price for those who need a simple and reliable underbarrel flashlight.
- Compatibility with the accessories for hunting — remote switches and mounts.
- Record runtimes: 1.5 hour at maximal mode and up to 200 days at minimal mode.

Model	Dobermann Pro XHP35 HI	Dobermann Pro XP-L HI
LED	Cree XHP35 High Intensity	Cree XP-L High Intensity
Optics	Smooth Reflector	
Brightness stabilization type	FULL (constant light)	
Light output, LED / OTF lumens*	1700 / 1400	1200 / 1000
Peak beam intensity, candelas	39000	36250
Hotspot / spill	5° / 40°	
Beam distance*	395 meters	381 meters
Modes, light output (OTF lumens*) and runtimes (measured with 18650 Li-Ion 3400mAh until the light output drops to 10% of the initial value)	Turbo2	1400 lm / 1h
	Turbo1	800 lm / 1.7h
	Main3	350 lm / 4h
	Main2	150 lm / 10.5h
	Main1	30 lm / 50h
	Firefly2	1.7 lm / 40d
	Firefly1	0.15 lm / 200d
	Strobe1	15Hz / 150 lm / 22h
Power source	1x18650 Li-Ion / 2x18350 Li-ion** / 2xRRCR123 Li-ion** / 2xCR123A	
Size and weight (without batteries)	Length 140mm, body diameter 25.4mm, head diameter 34mm, weight 115g	

* Light output for flashlights with Warm light are about 7% less, beam distances are about 3% less.

** It is allowed to use only protected Li-Ion batteries.

Set description



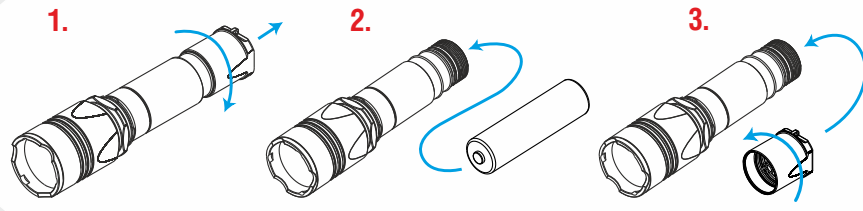
Dobermann PRO

Items included in the package:

- | | |
|-----------------|-------------------------|
| 1 - Flashlight | 5 - Holster |
| 2 - Clip | 6 - Spare rubber button |
| 3 - Rubber grip | 7 - 2 spare O-rings |
| 4 - Lanyard | 8 - User manual |

- ! ✓ Your flashlight can considerably differ from the pictures in the manual.
- ! ✓ The producer reserves the right to change the package at his own discretion without modifying this manual.

Initial Service



To set/replace batteries:

1. Unscrew the tailcap.
2. Place the batteries with the positive contact (+) facing the head of the flashlight.
3. Adjust the tailcap and tighten it as far as it can go.

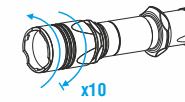
- ! ✓ We DO NOT RECOMMEND to use low-quality CR123A batteries, because they can explode. Turbo mode needs rechargeable 18650 Li-Ion batteries without PCB (unprotected) or with PCB which guarantees 7A discharge current for stable work.
- ! ✓ We DO NOT RECOMMEND to leave power sources inside the flashlight for a long storage period, as batteries can leak for various reasons and damage the inner parts of the flashlight. If you want to keep your flashlight in a stand-by state with batteries in then use new and high-quality batteries and store the flashlight in acceptable for batteries operational temperature and revise the batteries' state at least once a month. If you have noticed any signs of batteries' defects then withdraw them from the flashlight and utilize. It is also recommended to replace discharged batteries with new ones before the storage as the chance of leakage is higher with discharged batteries.

Active temperature control. The flashlight can quickly heat up in Turbo mode. When the temperature becomes +60°C – the brightness decreases by small steps. After cooling-down (provided that battery voltage is sufficient) the brightness increases to the Turbo mode again. This stepping goes cyclically to maintain the user's safety and the flashlight's functionality. In conditions of good air-cooling the flashlight delivers light without stepping down even in Turbo mode. There are no preset timers for stepping, but real-time active temperature measurements.

Operation

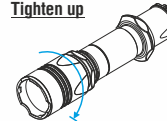
Change Hunting/Tactical settings

Unscrew & Tighten up x10



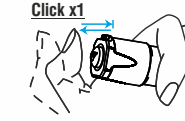
Constant light

Tighten up



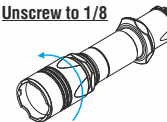
Turbo

Click x1



Strobe

Unscrew to 1/8



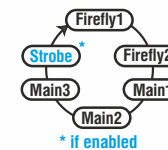
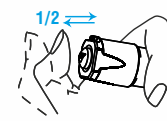
Additional modes

Click x1



Cycling through Additional modes

Half Press & Release (no click)



Momentary on – any mode switched on by half-pressing of the button (no click!) and active till the button is released. It is suitable for giving signals by short button pressings. Click the button to switch the light on permanently.

Hunting settings – comfortable modes for hunting. It's set by default. Turbo mode (when the head is tightened up) and Additional modes with constant light (changed by click with the head unscrewed to 1/8). Remote switch can be used in Turbo.

Tactical settings – made for Special forces and Airsoft. Constant light (when the head is tightened up) and Strobe mode (when the head is unscrewed to 1/8). There are 2 Strobe modes and 2 Constant light modes for selection. Remote switch can be used in ANY mode.

How to change the settings from one to another – unscrew and tighten up the head of the flashlight at least 10 times (while rotation you will change the modes). The pause must be <1 sec.

Hunting settings:

Turbo. Tighten the head of the flashlight if it is unscrewed. First full click of the button turns the light on. Second full click turns it off.

Additional modes (2 Firefly + 3 Main + Strobe (if enabled)). If the head of the flashlight is tightened up, unscrew it for 1/8 of a circle. Full click of the button turns the light on at the last used Additional mode.

Cycling through Additional modes. To switch the mode turn the flashlight off and on (by full click or half-pressing). The modes switch cyclically: Firefly1 – Firefly2 – Main1 – Main2 – Main3 – Strobe (if enabled).

How to add/ remove Strobe in Additional modes. Switch on the flashlight by half-pressing of the button at least 20 times. Last switch should be clicked completely. The flashlight blinks, confirming the action.

Tactical settings:

Constant light. Tighten the head of the flashlight if it is unscrewed. First full click of the button turns constant light on. Second full click turns it off. Also you can switch it on by half-pressing of the button (no click).

Change Constant modes. The head is tightened up: unscrew it for 1/8 and tighten up again – Turbo and Main2 will switch cyclically.

Strobe. If the head is tightened up, unscrew it for 1/8 of a circle. First full click of the button turns Strobe on. Second full click turns it off. Also you can switch it on by half-pressing of the button (no click).

Change Strobe modes. The head is unscrewed: tighten up and unscrew it for 1/8 again – Strobe1 and Strobe2 will switch cyclically.

How to set Turbo1 and Turbo2 Switch on the flashlight by quick half-pressing of the button at least 15 times. Last switch should be clicked completely. The flashlight blinks once (confirming the selection of Turbo1) or 2 times (confirming the selection of Turbo2).

Lock-out function. Unscrew the tailcap to 1/4 for the protection from accidental switching on.

Automemorizing. After switching off the last used Mode is memorized for quick 1-click access at next switching on.

Low Battery Indication. If the brightness is <25% from the nominal value, the LED flashes 2 times ONCE (after 30sec from switching on). If you are not sure if it flashed or not switch the flashlight off and on: in case the battery is low flashes will repeat. Light output decreases to Firefly mode at critical level.

Архангельск (8182)63-90-72
Астана (7172)727-132
Астрахань (8512)99-46-04
Барнаул (3852)73-04-60
Белгород (4722)40-23-64
Брянск (4832)59-03-52
Владивосток (423)249-28-31
Волгоград (844)278-03-48
Вологда (8172)26-41-59
Воронеж (473)204-51-73
Екатеринбург (343)384-55-89
Иваново (4932)77-34-06

Ижевск (3412)26-03-58
Иркутск (395)279-98-46
Казань (843)206-01-48
Калининград (4012)72-03-81
Калуга (4842)92-23-67
Кемерово (3842)65-04-62
Киров (8332)68-02-04
Краснодар (861)203-40-90
Красноярск (391)204-63-61
Курск (4712)77-13-04
Липецк (4742)52-20-81

Киргизия (996)312-96-26-47

Магнитогорск (3519)55-03-13
Москва (495)268-04-70
Мурманск (8152)59-64-93
Набережные Челны (8552)20-53-41
Нижний Новгород (831)429-08-12
Новокузнецк (3843)20-46-81
Новосибирск (383)227-86-73
Омск (3812)21-46-40
Орел (4862)44-53-42
Оренбург (3532)37-68-04
Пенза (8412)22-31-16

Россия (495)268-04-70

Пермь (342)205-81-47
Ростов-на-Дону (863)308-18-15
Рязань (4912)46-61-64
Самара (846)206-03-16
Санкт-Петербург (812)309-46-40
Саратов (845)249-38-78
Севастополь (8692)22-31-93
Симферополь (3652)67-13-56
Смоленск (4812)29-41-54
Сочи (862)225-72-31
Ставрополь (8652)20-65-13

Казахстан (772)734-952-31

Сургут (3462)77-98-35
Тверь (4822)63-31-35
Томск (3822)98-41-53
Тула (4872)74-02-29
Тюмень (3452)66-21-18
Ульяновск (8422)24-23-59
Уфа (347)229-48-12
Хабаровск (4212)92-98-04
Челябинск (351)202-03-61
Череповец (8202)49-02-64
Ярославль (4852)69-52-93

www.armytek.nt-rt.ru | | amy@nt-rt.ru